



01
 "SLIT One"
*from the SLIT series**
 Archival print
 Artist Proof, 57h x 40w
 2022



06
 "Garter Belts, triptych"
The beginning of the Art of Personal Mythology in 1984 (Original 5 ft. tall paintings—collection of Terry Fox)
 Archival print, unframed
 16h x 20w 2022



02
 "Que'est-ce que c'est?"
*from the On/Off series**
 Archival print, framed
 20h x 16w
 2020



07
 "SLIT Duo"
*from the SLIT Series**
 Archival print, on Dibond with mounting fixture
 46h x 30w
 2022



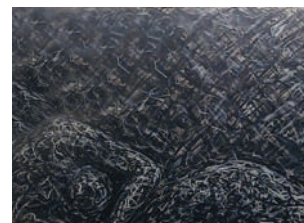
03
 "On/Off Alternatives"
*from the On/Off series**
 10h x 8w assemblages with switch plates on wood panels
 2022
Top row, Left to Right: #3, #2, #4
Middle row, Left to Right: #6, #9, #5
Bottom row, Left to Right: #7, #1, #4



08
 "Exposed 3&4"
from the Exposed series
 Archival print scanned from the 2017 72" x 72" drawing.
 23.5w x 23.5w, framed
 2022



04
 "The Twins"
from the Panther series, based on the poem "The Panther" by Rainer Maria Rilke
 Archival print scanned from 1998 drawing, framed, 2021



09
 "Frenzy"
from "all of us alone"
 Mixed media on Arches fine art paper, framed
 30h x 44w 2003



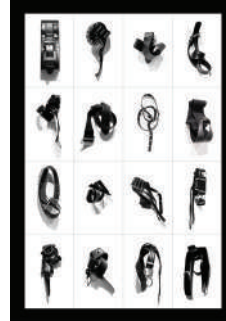
05
 "Ancestor"
*My first oil painting**
 1963



10
 "Body Armor Inspiration"
*Photograph of the original 1980s swimsuit for the Body Armor: Bathing Suit series**
 Archival print, framed
 27h x 20w 2022



11
 "Body Armor 12"
 from the
*Body Armor: Bathing Suit series**
 Mixed media on Arches
 fine art paper, framed
 41h x 26w 1997



15
 "Belted Grid of 16"
 from the *Belted series*
 Archival print, framed
 39.25h x 27.5w 2022



12
 "Relic 27: "Our secret marriage
 began in New Orleans, two years
 before Hurricane Katrina."
 from *Relics of Marriage*
 Archival print, framed
 36h x 22w 2015



16
 "PIT"
 from the *Belted series*
 Small installation of
 black belts
 2022



13
 "Relics of Marriage,
 Left Panel of Triptych"
 from *Relics of Marriage*
 Archival print, framed
 58h x 36w 2015



17
 "Shed 6"
 from the *Exuvia series*
 Fuji print on backside of
 clear acrylic with aluminum
 mounting fixture
 47h x 20w x 1.25
 2017



14
 "Relic 6: "My dress was boring,
 but I love what came out of it."
 from *Relics of Marriage*
 Archival print, framed
 36h x 22w 2015